

41.84 M / 137'28"



MAIN CHARACTERISTICS

Builder	Custom Line
Built Year	2023
Hull Material	FiberGlass - VTR
Length	41.84 M / 137'28"
Beam	8.14 M / 26'71"
Draft	2.29 M / 7'50"
Displacement	220.00 tons
Tax Status	VAT Unpaid

20,500,000 EUR 24,154,658 USD*

* Approximate price conversion

 Address:

3 Rue de la Loge L-1945 Luxembourg

 Contact

Thomas Peltier • P: +352.27.40.99.90 • M: +352.621.326.323

 E-mail:

t.peltier@seastemia.com

DESCRIPTION

True greatness in the boating world is measured by a yacht's style, not only the interior décor; but also in terms of inspirational design, overall concept and its idea of navigation. These elements make the Navetta 42, the biggest semi-displacement hull ever built by Custom Line, a seaborne vision that is a showcase for design in motion, sophisticated elegance, and extraordinary performance. Studio Zuccon International Project, Ferretti Group's Product Strategy Committee, and the Group's Engineering Department joined forces to design the yacht, the first in the history of the brand offering a transatlantic range of over 3,000 nautical miles. Every aspect of both the interior and exterior of this highly desirable yacht can be customised to take full benefit of its generous volumes and four decks, offering a perfect place to relax and enjoy the supreme quality of life on board. A huge suite on the main deck is reserved for the owner, who can opt for four VIP suites or five standard en-suite cabins to accommodate guests thanks to the versatile layout of the lower deck. The aft area is set aside for the large beach club at sea level offering fun and relaxation; the garage opens out onto the sea and is equipped with the new system for launching and hauling out of tenders and water toys.

SPECIFICATIONS

BOAT DETAILS

Main Category	Motor yacht	Boat Status	Brokerage
Built Year	2023	Tax Status	VAT Unpaid

CERTIFICATION

Certification	RINA	Compliance	□HULL, • MACH, Y Ch, Unrestricted Navigation, + MCA Compliance
----------------------	------	-------------------	--

BUILDER / DESIGNER

Builder	Custom Line	Naval Architect	Studio Zuccon
Hull Type	Semi Displacement	Hull Configuration	Mono Hull
Hull Material	FiberGlass - VTR		

DIMENSIONS

Length	41.84 M / 137'28"	Beam	8.14 M / 26'71"
Draft	2.29 M / 7'50"	Displacement	220.00 tons

MACHINERY

Engine Maker	Caterpillar	Drive	Shaft
Number of Engines	2	Propulsion Mode	Diesel
Engine(s) power	1,622.00 hp	Engine(s) model	CAT C32ACERT V12 Tier3
Engine 1 hours	2,275.00 H.	Engine 2 hours	2,275.00 H.
Gearboxes/Transmission	2xZF	Main Generator Maker	Zenoro
Main Generator Power	80.00 KW	Main Generator Hours	6,994.00 H.
Auxiliary Generator Maker	Zenoro	Auxiliary Generator Power	80.00 KW
Auxiliary Generator Hours	6,994.00 H.	Stabilizer Type	Hydraulic Thins
Stabilizer Maker	NAIAD DYNAMICS Zero speed and Underway	Water Maker	IDROMAR
Water Maker Flow	500.00 l/H / 132.00 gal/H	AC type	Tropical

PERFORMANCES

Cruising Speed	13.00 knots	Max Speed	16.00 knots
Range	3,000.00 NM	Cruising Speed for Range	10.00 knots

TANKAGES

Fuel	37,000.00 liters / 9,768.00 US gals	Water	4,000.00 liters / 1,056.00 US gals
Water Maker	4,000.00 liters / 1,056.00 US gals	Grey Water	1,900.00 liters / 501.60 US gals
Black Water	1,900.00 liters / 501.60 US gals		

ACCOMODATIONS

Sleeps	10 guests	Berths	5 double
Bathroom	5	Crew	9
Crew Cabin	9		

LAYOUT / INTERIOR

- Food lift from the upper deck pantry to the sun deck wet bar
- Dimmer lights for exteriors
- Dimmer lights for interiors
- Automatic opening for glass aft door in upper salon
- Electric balcony on portside with automatic opening door in MD
- Automatic opening door on starboard side dining area in MD
- Window with porthole in galley
- Porthole in port side window in master cabin
- Porthole in starboard side window in master cabin
- Electrical raising of curtains in UD
- Electrical raising of the of curtains in LD (4 cabins)
- Canopy in UD at aft and sides with glass on the bulwarks
- Bimini for dinette at bow (80mm diameter poles)
- Teak floor with black caulking on sun deck and forward triangle area
- Galley's custom fridge
- Washer and dryer Miele Professional upgrade
- Washer and dryer Miele in addition Professional Full-height Gaggenau fridge in upper deck pantry
- Wine cooler Dunavox 181 bottles in pantry upper deck
- Mini fridge in master cabin
- Separable beds in forward guest cabins
- Digital chain counters -couple-
- Manual bimini in upper deck cockpit (80 mm diameter poles)
- Aft sun deck removable bimini top
- A/V package Premium Sound Area A A/V package Domotic Area A
- A/V package Premium Sound External Sonance
- Platinum Internet Package with Kerio system
- TV 65" in master cabin

- TV 50" ultra HD in starboard VIP cabin
- TV 50" ultra HD in port VIP cabin
- TV 50" LED in port guests cabin
- TV 50" LED in starboard side guests cabin
- Antenna TV SAT KVH HD1 1 with receiver in salon
- Additional Antenna TV SAT KVH HD11
- Removable shower with stand at bathing platform
- Mosquito nets for all portoles
- Mooring whips in lateral spoonsons (4 pop up cleats + 4 whips) for Williams 625 DJ CCTV: security system with motion detector and recording
- Crew call system
- Mini pool by KOS model Quadrat with extended sunpad in the sun deck
- Anchor chain with 16 mm diameter and 150 mt length upgrade
- Layout with larger galley and different wardrobe in master cabin
- Electric door between salon and pantry
- Lacquered ceilings in glossy finishing (color RAL 9010)
- Modification of the crew area to accommodate 8 crew
- Rational (iCombi) oven in the galley
- Gaggenau professional appliances in galley (cooking top, oven under cooking top)
- Miele professional dishwasher
- Professional fast dishwasher Gastronomos for pantry MD
- Master cabin studio: desk with lateral cabinets in black oak and desk top in marble Calacatta
- Invisible black marble in bathrooms: all bathrooms (master and lower deck cabins) will be fitted with invisible black marble in shower and WC areas, floors, portals, washbasin tops (on top) Hoshizaki icemaker in MD pantry Gaggenau microwave in MD pantry
- Gaggenau built-in warming drawing in MD pantry
- Kitchen Aid blast chiller in MD pantry Gaggenau microwave in UD pantry
- Hoshizaki icemaker in UD lobby
- Hoshizaki icemaker in SD
- Teppanyaki cooking plate in SD
- N. 2 additional grills in SD
- Gaggenau fridge/freezer in crew lobby
- Miele dishwasher in crew area
- Hoshizaki icemaker in the beach area

- Electrical door in UD salon at port side
- Electrical door in UD salon at starboard side
- All hinges in polished chrome
- Door handles Olivari mod. Euclide in polished chrome Light switches in chrome color A/V Package domotic area B
- Stainless steel protection for all corners in pantry
- Parquet floor walnut in MD e UD: VERN.CARBONIO NOCSP349E cod 4261 17-
- Electric sliding door between salon and lobby
- Galley and pantry floors in Nero Assoluto
- Wall-hung WC and bidet in all bathrooms including day heads (except crew areas)
- Printer in cabinet in master office
- Sideboard with mirror, fridge and sink in beach area Teak frame in the escape of the main deck cockpit Valves duplication on the sea water line of the ER systems Master cabin furniture top in marble at starboard side
- Master Bathroom: create a locker furniture with flat marble top instead of the bidet on port side bathroom
- Lockers in bow dinette hinged and with sealing
- External lockers hinged with sealing (excluding the one of the bow dinette)
- Hand shower in the mini pool furniture
- Fixed TV 70" in UD salon diff.
- Fresh water outlet for washing in MD (walkway at port side, crew bilge, garage and engine room)
- Predisposition for V-SAT system
- Light underwater on bulb
- Centralized system for engines/inverters/generators oil change
- TV 50" in captain cabin diff.
- Compressed air outlets (1 in aft garage, 1 in bow garage, 1 in SD, 1 in UD on walkway, 1 in beach area, 1 in MD cockpit, 1 in starboard side walkway MD and 1 in port side walkway)
- Port side furniture in master cabin with top in marble nero marquinia
- Walls behind the bed head in LD cabins upholstered with Loropiana fabric Top of night tables and furniture in marble nero marquinia in master cabin
- Top of furniture below the wash-basin in marble nero marquinia in master bathroom
- Miele dishwasher in UD pantry
- Top of night tables and furniture under the TV in black leather in LD cabins estors master. Upholstery in Master cabin in fabric Loropiana and leather Poltrona Frau for bed head, bed frame, night tables doors and top, doors of furniture port and starboard side, doors furnitures at bow.
- Topper for mattress of master cabin (6/7 cm).

- Upholstery in the lower deck cabins different from standard in fabric loropiana and leather Poltrona Frau for bed head, bed frame, night table doors and top, doors of furnitures under the TV, portal above the bed.
 - Additional access point in beach area, crew dinette and wheelhouse
 - CCTV system
 - Side wings with monitors for repetition of aft cameras
 - 15" monitor repeater in the captain cabin
 - 24" multifunction panel Simrad Evo for navigation info
 - Additional water heater dedicated to master bathroom (with manual control)
 - Anti-slippery paint in the garage area
 - Custom bar furniture in the beach area with fridge and sink
 - Custom bar furniture in MD cockpit
 - Custom bar furniture in UD cockpit at starboard side
 - Custom bar furniture in UD cockpit at port side
 - Fridge 90lt by Frigonautica in UD bar furniture port side
 - Bar furniture in the SD
 - Curtains in Loropiana fabric
 - Bedcovers in Loropiana fabric
 - Cover above the Jacuzzi
 - Carbon swimming ladder
 - I-pad master to control a/c, curtains and internal, external lights Privacy curtain in MD cockpit
 - Upholstery for external cushions in sunbrella fabric
 - Miele Fridge model K311222Ui in the galley.
-
- Waterproof covers for sunpad and dinette at bow.
 - LD cabins: portal on bed with loropiana fabrics
 - Interior and exterior furnitures (as per pictures).

COMMUNICATION & NAVIGATION EQUIPMENT

- Underwater lights (8 on each side and 4 at aft)
- Watermaker Idromar 250+250 /h duplex
- UV sterilizer for drinkable water
- Idrostop seal
- Water softener
- Active carbon filter
- Tropical air conditioning with UTA
- Compressor for diving bottles
- MCA compliance
- Blackbox full ECDIS (Paperless)
- Immarsat Mini C communication transmission system
- Camera Flir night & low (double eye)
- Super Premium integrated bridge
- Crane with max loading 500 kg for bow garage Williams tender 625 Dieseljet with optional accessories
- Re-fuelling station in tender garage Pop-up cleats in bathing platform
- Stern thruster hydraulic 80HP
- Shore voltage and frequency converter of 50hz Atlas (Electric Power Converter)
- Flir thermal night vision CCTV
- Full integrated bridge with touch screen monitors
- AIS Furuno Class A
- Furuno Blackbox ECDIS system (paperless)
- 5G and Wi-Fi internet connection & internal Wi-Fi system
- predisposition for V-SAT Antenna Mini Internet KVH-V7
- Immarsat Mini C
- CCTV security system with motion detection and recording
- side wings monitors for aft CCTV for mooring
- 15" repetition monitor in captain cabin

RECREATIONAL EQUIPMENT

Williams tender 565 Diesel Jet



41.84 M / 137'28"

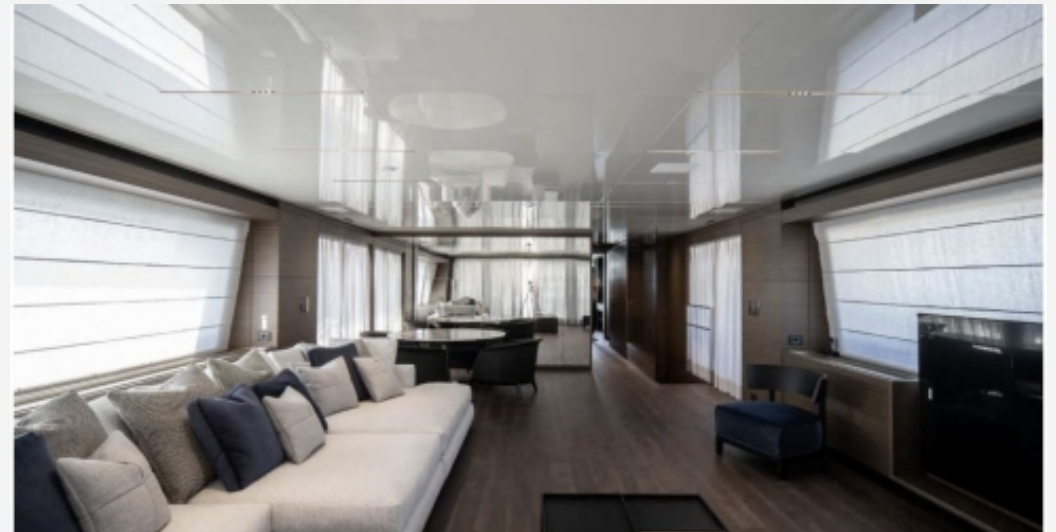








41.84 M / 137'28"



41.84 M / 137'28"













