

62.70 M / 205'71"



CARACTÉRISTIQUES PRINCIPALES

Builder**Designer**Enrico Gobbi, T4 - Team
for Design**Built Year**

2018

Refit Year

2022

Length

62.70 M / 205'71"

Beam

11.00 M / 36'9"

Draft

2.06 M / 6'75"

Displacement


443.29 tonnes

Registry

Iles Marshall

44,300,000 EUR 50,715,437 USD*


* Conversion approximative

 Adresse:

3 Rue de la Loge L-1945 Luxembourg

 Contact

Thomas Peltier • P: +352.27.40.99.90 • M: +352.621.326.323

 E-mail:

t.peltier@seastemia.com

62.70 M / 205'71"

SPÉCIFICATIONS

DÉTAILS DU BATEAU

Main Category	Motor yacht	Boat Status	Brokerage
Built Year	2018	Refit Year	2022
Registry	Iles Marshall		

CERTIFICATION

Certification	RINA
----------------------	------

BUILDER / DESIGNER

Builder		Designer	Enrico Gobbi, T4 - Team for Design
Naval Architect	Arrabito	Hull Type	Semi Displacement
Hull Configuration	Mono Hull		

DIMENSIONS

Length	62.70 M / 205'71"	Beam	11.00 M / 36'9"
---------------	-------------------	-------------	-----------------

62.70 M / 205'71"

DIMENSIONS

Draft	2.06 M / 6'75"	Displacement	443.29 tonnes
--------------	----------------	---------------------	---------------

MACHINERY

Engine Maker	MTU	Drive	Shaft
Number of Engines	4	Propulsion Mode	Diesel
Engine(s) type	Inboard	Engine(s) power	10,400.00 hp
Engine(s) model	16V 2000 M96L	Heures moteur 1	3,119.00 H.
Heures moteur 2	3,203.00 H.	Heures moteur 3	2,931.00 H.
Main Generator Maker	Caterpillar	Main Generator Power	167.00 KW
Main Generator Hours	16,754.00 H.	Auxiliary Generator Maker	Caterpilla
Auxiliary Generator Power	167.00 KW	Auxiliary Generator Hours	15,140.00 H.
Stabilizer Type	Hydraulic Thins		

PERFORMANCES

Cruising Speed	26.00 noeuds	Max Speed	33.00 noeuds
-----------------------	--------------	------------------	--------------

62.70 M / 205'71"

PERFORMANCES

Range	3,300.00 NM	Cruising Speed for Range	12.00 noeuds
--------------	-------------	---------------------------------	--------------

TANKAGES

Fuel	45,000.00 litres / 11,880.00 US gals	Grey Water	4,000.00 litres / 1,056.00 US gals
-------------	--------------------------------------	-------------------	------------------------------------

ACCOMODATIONS

Sleeps	12 guests	Courette	3 simple, 4 double
---------------	-----------	-----------------	--------------------

Bathroom	6	Crew	9
-----------------	---	-------------	---

	9		
--	---	--	--

62.70 M / 205'71"



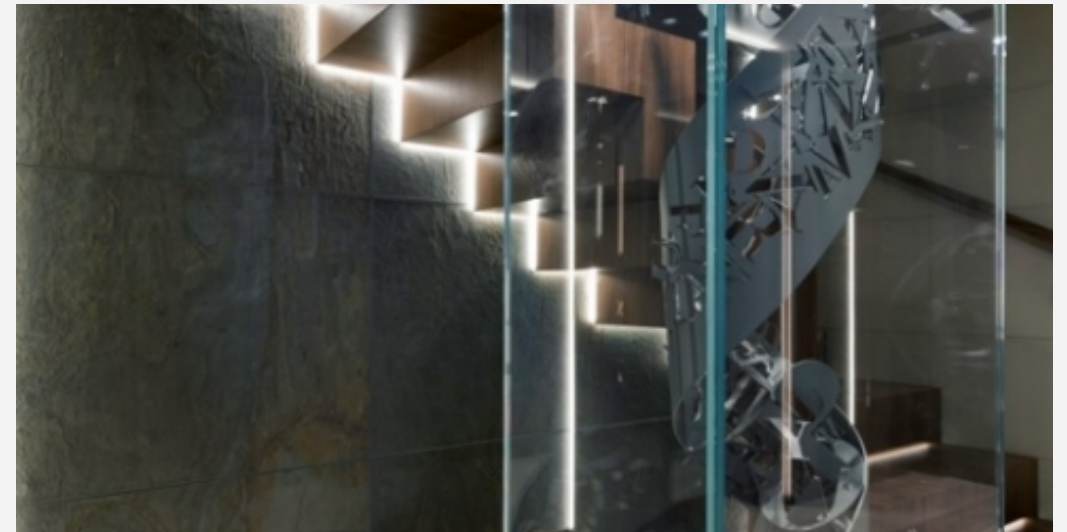
62.70 M / 205'71"



62.70 M / 205'71"



62.70 M / 205'71"



62.70 M / 205'71"



62.70 M / 205'71"



62.70 M / 205'71"



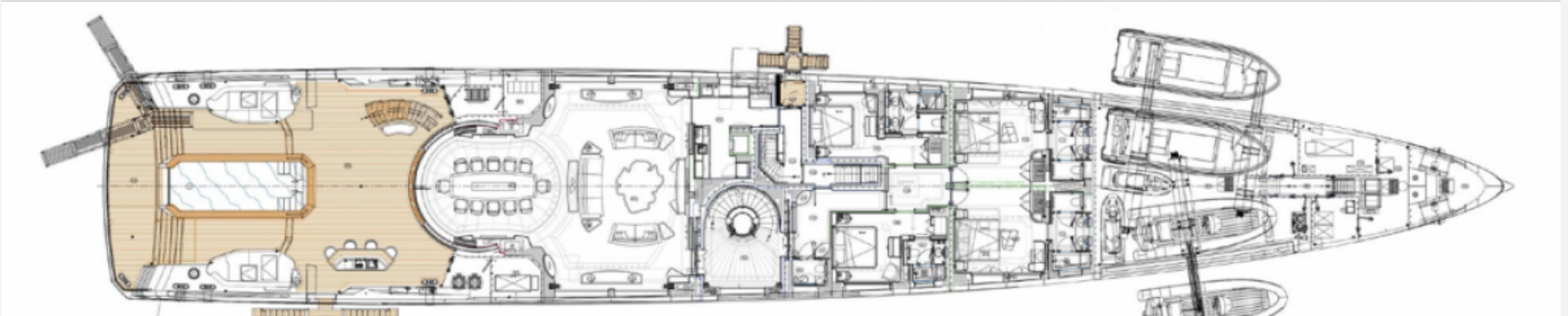
62.70 M / 205'71"



62.70 M / 205'71"



62.70 M / 205'71"



62.70 M / 205'71"

