

33.00 M / 108'26"



CARACTÉRISTIQUES PRINCIPALES

Built Year	2017
Length	33.00 M / 108'26"
Beam	7.68 M / 25'19"
Draft	2.18 M / 7'15"
Displacement	160.00 tonnes

9,500,000 EUR 11,193,622 USD*

* Conversion approximative

🏠 Adresse:

3 Rue de la Loge L-1945 Luxembourg

📞 Contact

Thomas Peltier • P: +352.27.40.99.90 • M: +352.621.326.323

✉ E-mail:

t.peltier@seastemia.com

DESCRIPTION

In a world that, now more than ever, is in need of beauty, the Navetta 33 exudes the subtle charm of an alluring and sophisticated diva of the waves, enticing with its beguiling blend of styles, forms and inspirations. Nothing is quite as chic as the new Custom Line semi-displacement yacht, which caters to the desires of every owner who wishes to savour the joys of sailing by making the step up from simple luxury to genuine refinement. The Navetta 33 is the product of the joint efforts of the Product Strategy Committee, headed by Piero Ferrari, along with the Group's Engineering Department, whose architects and designers worked on the interior design, and Zuccon International Project, which was responsible for the exterior design. This yacht (108.3 ft.) introduces considerable technical advances to the line, which serve to complement the innovations that have already been admired in previous Custom Line models. For instance, the hull features a bulbous forward section and delivers performance at the top of its class in terms of seaworthiness and stability, with a range of up to 2,000 nautical miles at economical cruising speed. In addition, yacht owners and their guests can make the most of marvellous spaces across all 4 decks: from the wide-body master suite forward on the main deck, to the 4 guest cabins on the lower deck. The Navetta 33 furthermore features all of the technical innovations presented on Custom Line's latest models: the patented DMT system for optimum use of the stern area; VOTIS software for flexible, practical management of the infotainment systems on board; and an integrated helm station, for completely safe sailing and monitoring of the systems and equipment on board. Absolute comfort is also guaranteed in terms of stabilisation when at anchor and when mooring, thanks to electro-hydraulic stabilising fins with zero speed mode, in addition to, on the first unit, two Seakeeper gyroscopic stabilisers.

33.00 M / 108'26"

SPÉCIFICATIONS

DÉTAILS DU BATEAU

Built Year	2017
-------------------	------

DIMENSIONS

Length	33.00 M / 108'26"
---------------	-------------------

Beam	7.68 M / 25'19"
-------------	-----------------

Draft	2.18 M / 7'15"
--------------	----------------

Displacement	160.00 tonnes
---------------------	---------------

MACHINERY

Engine Maker	Caterpillar
---------------------	-------------

Drive	Shaft
--------------	-------

Number of Engines	2
--------------------------	---

Propulsion Mode	Diesel
------------------------	--------

Engine(s) power	1,622.00 hp
------------------------	-------------

Engine(s) model	CAT V12 C32
------------------------	-------------

PERFORMANCES

Cruising Speed	13.00 noeuds
-----------------------	--------------

Max Speed	16.00 noeuds
------------------	--------------

Range	1,120.00 NM
--------------	-------------

33.00 M / 108'26"

TANKAGES

Fuel	20,000.00 litres / 5,280.00 US gals	Water	3,000.00 litres / 792.00 US gals
-------------	-------------------------------------	--------------	----------------------------------

ACCOMODATIONS

Sleeps	10 guests	Courette	2 simple, 4 double
Bathroom	5	Crew	4
	4		

33.00 M / 108'26"



33.00 M / 108'26"



33.00 M / 108'26"



33.00 M / 108'26"



33.00 M / 108'26"



33.00 M / 108'26"



33.00 M / 108'26"



33.00 M / 108'26"



33.00 M / 108'26"



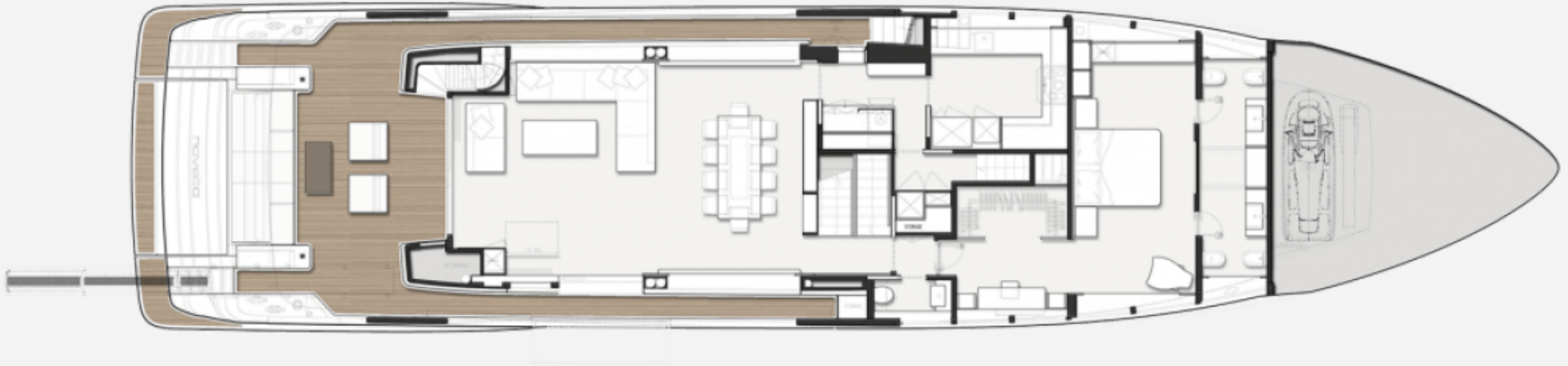
33.00 M / 108'26"



33.00 M / 108'26"



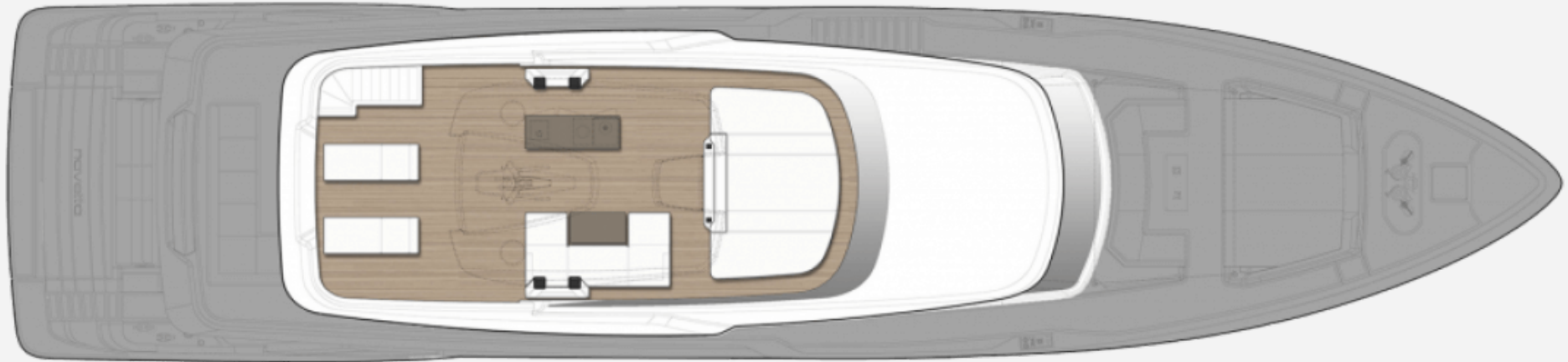
33.00 M / 108'26"



33.00 M / 108'26"



33.00 M / 108'26"



33.00 M / 108'26"

